

Wireless N900 High Power Dual Band Access Point

W900A

W900A is a dual-band indoor ceiling access point for hotels, resorts, office buildings, campus or other environments that need to extend and expand an existing network wireless. Compliant with IEEE 802.11a/b/g/n, Providing concurrent 450Mbps rate data on both 2.4G&5G frequency. Adopt Independent 400mw power amplifier to enhance wireless signal at 2.4GHz to improve wall penetration. Pair with the 6 high quality antennas to provide great coverage and boost wireless signal for laptops, tablets and smartphones. With the aesthetic ceiling Design, W900A can be deployed easily on ceiling or in crawlspaces. Also, W900A can be deployed in areas where power outlets are scarce or not available with PoE Injector included.



Dual Band

Up to 450 Mbps on each of the 2.4 and 5 GHz frequency bands help you to avoid interference and maximise throughput for faster file transfers and smoother video streaming



Ceiling Design

With the aesthetic ceiling Design, W900A can be deployed easily on ceiling or wall



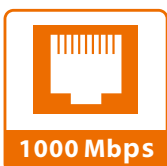
400mw High Power

Adopt independent 400mw power amplifier to enhance the wireless signal at 2.4GHz to penetrate walls for great connectivity. Thus, the wireless signal is stronger and the coverage is optimized.



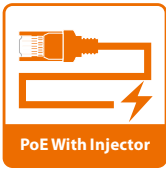
High Performance Antennas

Pair with 6 high quality antennas to maintain high speeds and provide excellent coverage and reliability for wireless clients, such as laptop, smartphone, ipad



Gigabit Ethernet Port

Up to 10X faster data transfer than traditional Fast Ethernet to offer greater bandwidth capacity and faster data transfers, ideal for streaming videos, VOIP, music, and multimedia application



Power Over Ethernet

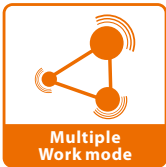
The PoE port on the back panel allows both power and data to be carried over a single Ethernet cable to W900A with the Injector included. So the W900A can be deployed in areas where power outlets are scarce or not available



Industry Wireless Security

W900A offers multi-level wireless encryption options to prevent unauthorized access and protect your important data.

- 1.64/128bit WEP,WPA-PSK,WPA2-PSK,WPA&WPA2-PSK,WPA,WPA2
- 2.Wireless Access Control based on the mac address of wireless adapter



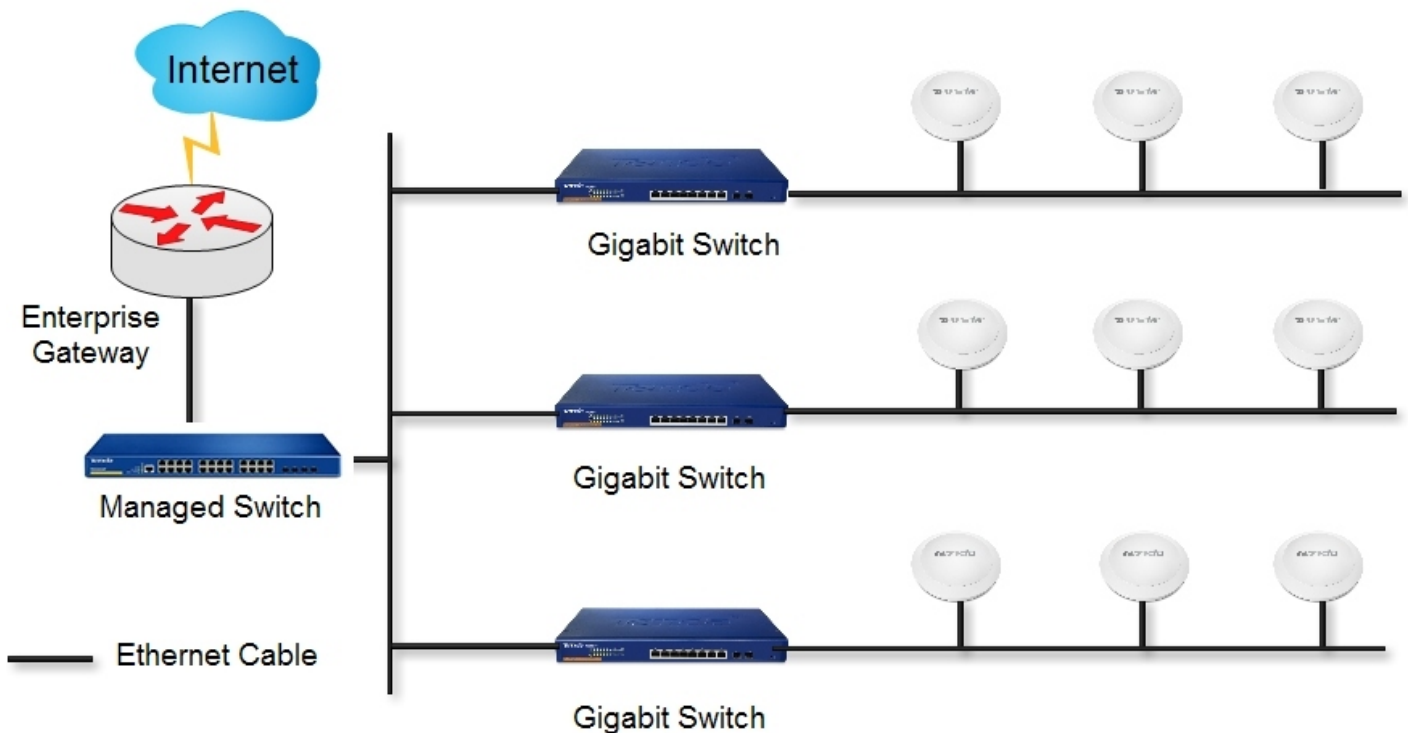
Multiply Operation mode

W900A can be configured to work as wireless Access Point,WDS Repeater, Universal Repeater mode and help you expand existing network

Deploy Scenarios



Solution Topology



Specification

Hardware Features	
Dimensions	199.28*199.28*36.47mm
AP Type	Fat AP
Interfaces	2*GE LAN
Antenna	2.4G 3*5dbi antennas 5G 3*5dbi antennas
Button	1*Reset
Power Method	PoE Injector
Maximum Power Consumption	26W
Maximum Transmit Power	2.4GHz 400mw(26dbm) 5GHz 100mw(20dbm)
LED indicator	SYS, 2.4G WiFi, 5G WiFi
Software Features	
Compliant Standards	IEEE 802.11n/g/b/a
Frequency Range	2.4G&5G
Maximum wireless speed	2.4G 450Mbps 5G 450Mbps
Wireless Basic Settings	2.4G 8 SSID 5G 2 SSID Enable/Disable Wireless Radio Wireless Client isolation Wireless Access Control Wireless Client list Adjustable transmit power
Wireless Security Settings	64/128 WEP WPA-PSK WPA2-PSK WPA&WPA2-PSK WPA WPA2
Working mode	AP,Bridge,Repeater,Universal Repeater
Maximum Concurrent Clients	2.4G 25 clients 5G 25 clients
Receiver sensitivity	a mode: -75dBm@8% b mode : 1M -95dBm@8% 11M -87dBm@8% PER g mode:54M -78dBm@8% PER n mode:72.2M -74dBm@8% PER; 150M -70dBm@8% PER
Modulation	MIMO-OFDM/OFDM/DSSS
LAN Settings	Static IP
VPN Pass-Through	PPTP, L2TP
Management Tool	SNMP(v1&v2c) Reboot System Log Firmware update Time&Date Setting Backup/Restore Configuration Username Managerment Diagnostic Tool(ping&Traceroute)
Others	
Package Contents	Wireless N900 High Power Dual Band Access Point W900A 1*Mounting Bracket 1*Quick Installation Guide 2*Ethernet cable 1*PoE Injector 1*Power Adater 5*Screw 5*plastic anchor bolt
Operating Temperature	-10°C~45°C
Storage Temperature	-30°C~70°C
Operating Humidity	10%~90% non-condensing
Storage Humidity	10%~90% non-condensing
Default Settings	IP Address: 192.168.0.254 Login Username:admin Login Password:admin
Certifications	None