



# IP camera

## Quick Installation Guide

### Package list:

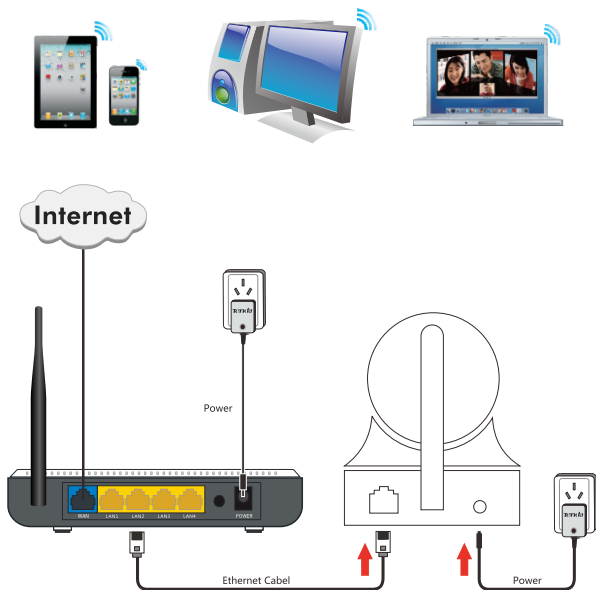
- One IP-Camera
- One Quick Installation Guide
- One RJ45 Cable
- One Mounting Bracket set
- One Power Adapter

If any item mentioned above is missing or damaged, contact the place of purchase immediately.

# 1

## Connect Camera to Internet

**Step 1:** Take out the camera, connect included power adapter to camera, then connect Ethernet cable between the camera and LAN port on your Router.



**Note:** Pls make sure the DHCP function is ON in your Router.

# 2

## Smartphone Install and View

**Step 2:** Apple iOS: Search " CloudNeteye" from your "Apple app store" ,download and install.

Android OS: Search the " CloudNeteye" from your "Google play", download and install. If you do not have "Google play" in smartphone, please download and install "Google play" at first.



CloudNeteye

**Step 3:** Run CloudNeteye APP, click “ADD Camera”, then click “Scan” or “QR code”, scan UID QR Code at the bottom of the camera, input the password “admin”, click “OK” or “Save” to finish add camera.


**Step 4:** After add the camera successfully, its status will show “Online”, you can view the camera, “Preview picture”, “Snapshot”, “Mute/Listen/Speak”.

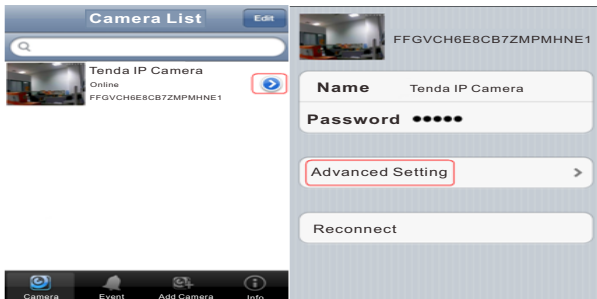
Online/LAN



640\*320/ FPS:14 / bps:209Kbps

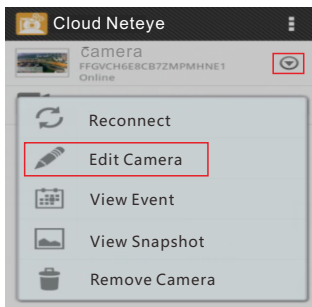
Online Nm : 1 /Frame ratio : 1 / 121



**Step 5:1.iPhone:**Click  , enter “Advanced Setting ”, then you can do “Wifi” setting, “Motion detection” setting, “Recording” setting and so on.



**2.Android smartphone:**Click  ,enter “Edit Camera”  ,you can do “WiFi setting”, “Video setting”, “Recording setting” and so on.





# 3

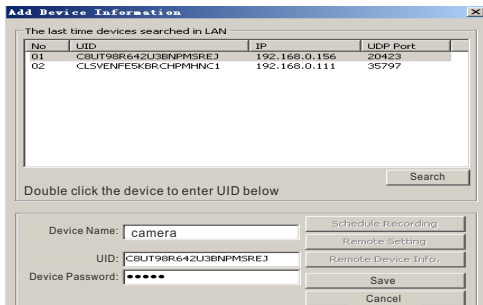
## PC Install and View


Visit Tenda official website [www.tendacn.com](http://www.tendacn.com), search your model on the top right corner, click and enter the product you found. Click the "Downloads" and get the "PC P2P remote Software", install "CloudNeteyeForPC" after decompressed.

**Step 1:** Run "CloudNeteyeForPC.msi", install it in your computer.

**Step 2:** After finish install, click  to run it, and click  to add camera. Input device name (user decide), UID (at the bottom of the camera) (Note: If use this software in LAN, User can click "Search", then you will find the UID of camera, Double click the UID, then can add camera on the following UID text box) and password "admin", click "Save".

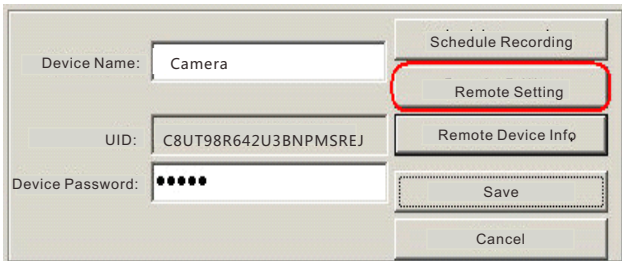
Double click the camera in the Device List, then you can view.




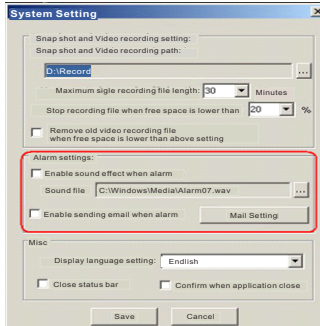
**Step 3:** Select your camera in the following page,click  , enter “Camera Setting”.



**Step 4:** Select “Remote setting” in the following page.After enter remote setting page,you can do “WiFi Setting”, “Video setting”, “Motion detection”and so on.



**Step 5:** Click , enter "System Setting" page, you can do setting like "Recording Path", "Alarm Setting", "Mail Setting" and so on.



## Environmental Protection Download

How to get "Setup Wizard" and "User Manual"?

1. Visit Tenda official website [www.tendacn.com](http://www.tendacn.com)
2. Search your model in top right corner,
3. Click and enter the product you found. Click the "Downloads" and get the "Setup Wizard" and "User Manual".

Shenzhen Tenda Technology Co.,Ltd

6-8 Floor, Tower E3, No. 1001, Zhongshanyuan Road, Nanshan District, Shenzhen, China. 518052

Free long distance telephone hotline:86-755-86591006

Email:IPC@tenda.com.cn website:www.tendacn.com

Specifications are subject to change without notice. Tenda is the registered trademark of Shenzhen Tenda Technology Co.,Ltd.

ALL products and product names mentioned herein are the trademarks or registered trademarks of their respective owners. ©2014 TENDA ALL Rights Reserved.